

# **USER MANUAL**

- **CVC-627**
- **CVC-627B**
- **CVC-627W**



 **speco technologies**



# CONTENTS

01

**Features**

02

**Warning & Caution**

03

**Configuration**

06

**Accessories**

07

**How to install**

08

**Specifications**

09

**Troubleshooting**

11

1. Excellent performance in all light levels
2. Reflective booster increases LED output by 30%
3. IR LEDs effective over 10 meter distance
4. CDS sensor activates IR LEDs only as needed
5. Weatherproof and waterproof for "all-season" operation
6. Constructed of corrosion-free aluminum for long life
7. Adjustable sunshield adds to the cameras versatility
8. Color by day-B/W by night

**-Follow the instructions-**

Please follow the instructions for safe use.

**Information**

Read this user guide carefully before any installation for safe operation of product.

**WARNING**

Indicating the possibility of serious injury or death.

**CAUTION**

Indicating the possibility of injury or material loss.

- Please study the instruction manual and keep it for your future reference.



- Do not aim LED light directly on the eyes when LEDs are on.



- Do not use improper power, it could cause fire or electric shock.



- Do not disassemble the camera, it could cause fire, electric shock or other hazards.



- Stop using the camera when you find a malfunction like smoke or unusual heat, it could cause fire or electric shock.



- Please use the camera unit within given temperature and electricity limit.



- Please make sure that installation should be done by qualified service person only.

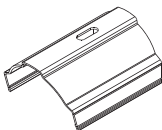


- Do not disassemble the unit by yourself. When there is problem with the unit please contact service center.

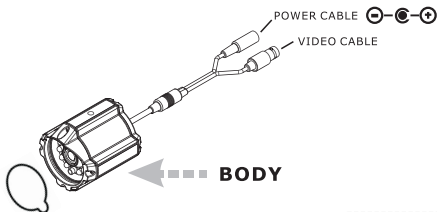




**SUNVISOR  
Fixing Bolt**



**SUNVISOR**



POWER CABLE ⊖ — ⊕ ⊕

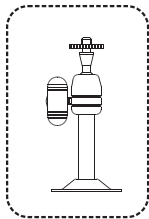
VIDEO CABLE

**BODY**



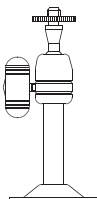
**PROTECTION  
SHEET**

**BRACKET**





## User Manual & Warranty Card

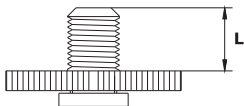


**Bracket**



**Adaptor**

1. Attach the mounting bracket to the camera
2. Attach the bracket to the hole below or over the camera tightly



**-Screw dimension for the hole-**

1/4"-20 UNC(20 THREAD)

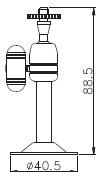
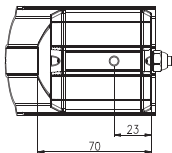
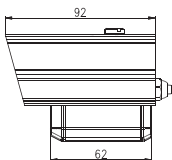
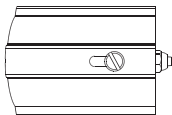
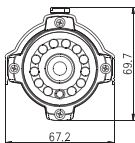
L: 4.5mm  $\pm$  0.2mm(ISO standard)

0.197:(ASA standard)

3. If you want to attach the bracket to the hole over the camera, you should do that after removing the screw to fix the sunvisor. And then install the camera on the wall or ceiling
4. Connect the video cable of this camera to the monitor
5. Connect the power cable to the power supply adaptor
  - Power supply should be a regulated DC 12V 500mA.
  - The power should be connected after installing the camera.

# SPECIFICATIONS

Dimension 09



<b>MODEL NO</b>	CVC-627	CVC-627B / CVC-627W
<b>Camera Type</b>	1/4" Color CCD Camera	
<b>Image Sensor</b>	1/4" 270K Color CCD	
<b>Effective Pixel</b>	510(H) x 492(V)PIXEL(NTSC)	
<b>Cell Size</b>	7.2 $\mu$ m(H) x 5.6 $\mu$ m(V)(NTSC)	
<b>Horizontal Resolution</b>	350 TV-LINE	
<b>TV Type</b>	NTSC	
<b>Sync. Type</b>	Internal	
<b>Scanning System</b>	2:1 Interlace	
<b>Video Output</b>	1Vp-p(Sync,Negative) Termination 75 $\Omega$	
<b>Gamma Characteristic</b>	$\gamma=0.45$ Typ.	
<b>Min. Illumination</b>	1 Lux (LED OFF)	
<b>S/N Ratio</b>	48dB over(AGC OFF)	
<b>Gain Control</b>	Automatic Gain Control	
<b>IRIS</b>	Electronic	
<b>Shutter Speed (Electronic)</b>	1/60 ~ 1/100,000 second	
<b>Test illuminance area</b>	Average test illumination by front view	
<b>Power Supply</b>	Regulated DC 12V	
<b>Consumption Current</b>	Max. 150mA (DC 12V.LED OFF) Max. 330mA (DC 12V.LED ON)	
<b>Operation Temp.</b>	-10 $^{\circ}$ C ~ 50 $^{\circ}$ C	
<b>Preservation Temp.</b>	-20 $^{\circ}$ C ~ 60 $^{\circ}$ C	
<b>LED</b>	IR LED	
<b>LENS</b>	3.6mm fixed focal lens	
<b>Dimension</b>	69.7(W) X 92(H)mm	
<b>Weight</b>	1,200g(with 60FT Cable): 350g(with 6FT Cable)	

<b>Problem</b>	<b>Solution</b>
<b>Nothing appears on the screen</b>	<ul style="list-style-type: none"><li>• Check if the power cord and line connection between the camera and monitor are connected properly</li></ul>
<b>The image on the screen is dim</b>	<ul style="list-style-type: none"><li>• Check whether the window is stained. If dirty, clean the lens with soft and clean cloth</li></ul>
<b>The image on the screen flickers</b>	<ul style="list-style-type: none"><li>• Does the camera face to the sun directly or fluorescent light? Change the camera position</li></ul>
<b>The contrast on the screen is too weak</b>	<ul style="list-style-type: none"><li>• Adjust the contrast feature of the monitor</li><li>• If the camera is exposed under too strong light, change the camera position</li></ul>

**\*If you can not solve the problem, please contact an authorized technician**

# MEMO

A large rectangular area defined by a dashed black line, intended for writing the content of the memo. The top edge of this area is integrated into a dark grey header bar.

# MEMO

A large rectangular area with a dashed border, intended for writing a memo. The border is composed of small black squares spaced evenly along the perimeter. The top edge of the page is a solid dark grey bar with rounded corners, containing the word "MEMO" in white, bold, uppercase letters.



200 New Highway  
Amityville, NY 11701

Toll Free : 1-800-645-5516

In Metro NY : 631-957-8700

38052918

Printed in Korea